

Internet filtering for homes

Net Nanny Web Filtering

Net Nanny, the most trusted brand in Internet parental controls, brings you the most effective and flexible Internet filter available today! The state-of-the-art dynamic filtering engine ensures that your family members won't be exposed to pornography and other inappropriate content.

Net Nanny is the only family-oriented filter that allows you to manage your home Internet use from anywhere at any time through powerful Remote Management tools. Net Nanny can be used as configured right "out of the box" or you can adjust the filter settings according to your personal preferences and needs.

Net Nanny is the #1 rated Internet filter by Internet Filter Review (www.internetfilterreview.com).

How does Net Nanny Work?

Net Nanny uses dynamic analysis (in conjunction with word and URL lists) to filter Web content. As Web pages are requested, Net Nanny's dynamic analyzing engine has the ability to understand content in context and filter appropriately. Based on the user's filter settings, content is either filtered or blocked.

Features/Benefits

#1 Rated Internet Filter – Internetfilterreview.com; Filterguide.com

Performance – Net Nanny is approximately 400% faster at dynamic contextual filtering than previous versions.

Integration With Popular Search Engines – Net Nanny leverages "Safe Search" type options found in popular search engines such as Google, Yahoo, Dogpile, AltaVista, Lycos, AllTheWeb, and MSN. This new feature will enable better protection against pornographic images when doing an image only search.

Remote Management – Powerful Remote Management tools exist to help parents to manage and maintain Internet policies remotely if an Internet connection exists.

Enhanced Reporting – Net Nanny reports have been enhanced through the use of Flash technology. Reports are dynamic in nature and provide parents with a first class presentation of Internet activity of children. Reports track where, when and how often children visiting certain web sites by category.

Time Management – Net Nanny includes a powerful time management feature that permits administrators to set the time of day when users can access the Internet as well as a time quota feature that permits administrators to assign a block of time to a user. Once that user's time quota is used up, they can no longer access the Internet.

Customized Lists – Net Nanny permits parents to create customized lists of unacceptable or acceptable Web sites. For example, parents could set up a list (white list) of friendly sites that don't necessarily get filtered.

Email Notifications – Parents can be notified via email when certain users are trying to violate or override the defined Internet Usage Policy.

Instant Messaging – Net Nanny provides better tools for managing access to popular Instant Messaging applications.

Internet Game Management – Net Nanny permits administrators to block access to certain Internet games.

Peer-to-Peer Management – Net Nanny permits administrators to block access to certain Peer-to-peer (P2P) sites.

Customization – Net Nanny is highly customizable permitting each family member to have their own filtering settings, rather than forcing them into a "one size fits all" scenario like some products do.

Integration With Windows Login – Administrators can choose to simplify the login process by combining the Net Nanny login with the Windows login.

Multi-Language Support – To increase Internet protection Net Nanny now filters Internet content in multiple languages. Our new interface is also available in English, Spanish, and Chinese with more language packs available shortly.

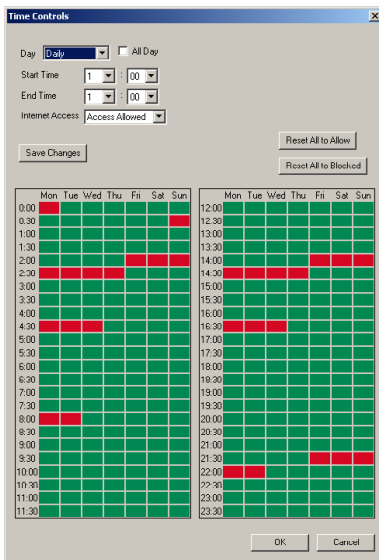
Automatic Updates – With state-of-the-art technology, ContentWatch updates users with the latest lists, definitions, and technology, as they become available. This process can happen automatically or manually depending on the user preference enabling the customer to have the most current version of the software available.

System Requirements

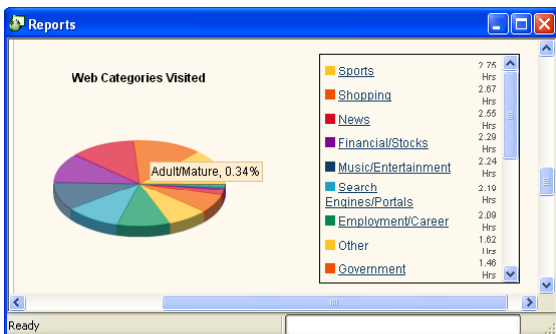
- PC or Compatible 133 MHz or faster processor
- Microsoft Windows 2000/XP/Vista
- 128 MB ram minimum
256 MB ram recommended
- 25 MB hard drive space
- CD-ROM drive
- Color monitor with a minimum 800x600 resolution
- Internet connection
- Internet Explorer 4.0 or greater, Netscape 6.0 or greater or other current web browser



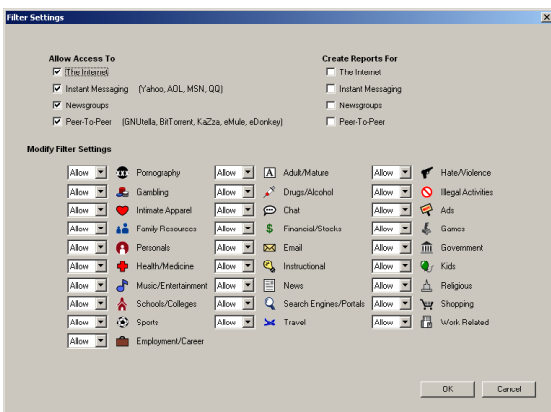
Internet filtering for homes



Net Nanny's Time Management feature enables you to create timetables when individual users may access the Internet. With the click of the mouse, you can effortlessly set access times for each user.



Previous versions of Net Nanny included world-class reports. Net Nanny's new and improved reporting engine introduces enhanced reports using Flash technology. Reports are interactive and permit parents to drill down and get detailed information by category, time, date, frequency, length of visit and more.



Net Nanny blocks and filters on 28 different categories. According to your own preferences and standards, you can easily adjust our filter to either permit or block access to certain Web content.

Support

Toll-free Technical Support – Net Nanny is backed by toll-free technical support. ContentWatch also offers email support with an average response time of less than twenty-four hours.

Our number 1 ranked product and Top 10 Reviewers' Choice Gold Award Winner Net Nanny (Formerly ContentProtect) from ContentWatch is an outstanding Internet filter. Net Nanny is an excellent product coming out on top as the overall best family Internet filtering software in the market place. Net Nanny is a powerful filtering tool that allows you to determine what Internet content enters your home.

©2002 - 2007 by ContentWatch Incorporated. All rights reserved. ContentWatch, Net Nanny, ContentProtect, ContentCleanup, and VirusProtect are trademarks or registered trademarks of ContentWatch Incorporated. All other company and/or product names may be trademarks or registered trademarks of their owners. Information in this document is subject to change without notice.